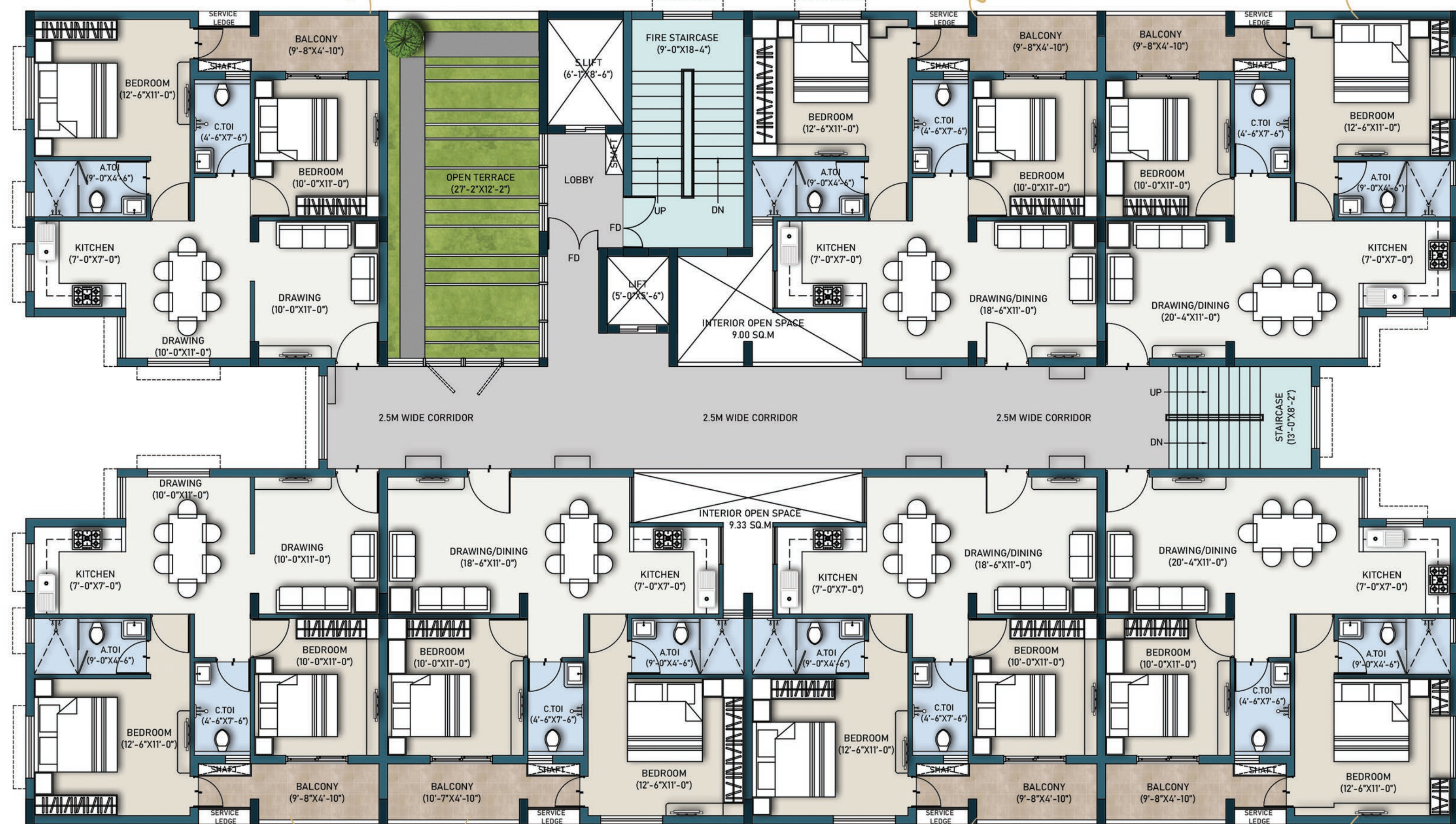


Flat No: A-5, B-5, C-5, D-5, E-5 (2BHK)  
 Carpet area: 60.28 SQ.M  
 Balcony Area: 5.85 SQ.M  
 Built Up Area: 73.54 SQ.M  
 Super Built Up Area: 99.27 SQ.M (1069 SQ.FT.)

Flat No: A-6, B-6, C-6, D-6, E6 (2BHK)  
 Carpet area: 58.25 SQ.M  
 Balcony Area: 5.85 SQ.M  
 Built Up Area: 70.04 SQ.M  
 Super Built Up Area: 94.55 SQ.M (1018 SQ.FT.)

Flat No: A-7, B-7, C-7, D-7, E-7 (2BHK)  
 Carpet area: 60.29 SQ.M  
 Balcony Area: 5.85 SQ.M  
 Built Up Area: 72.63 SQ.M  
 Super Built Up Area: 98.05 SQ.M (1056 SQ.FT.)



TYPICAL FLOOR PLAN



Flat No: A4, B-4, C-4, D-4, E-4 (2BHK)  
 Carpet area: 60.29 SQ.M  
 Balcony Area: 5.85 SQ.M  
 Built Up Area: 72.67 SQ.M  
 Super Built Up Area: 98.10 SQ.M (1056 SQ.FT.)

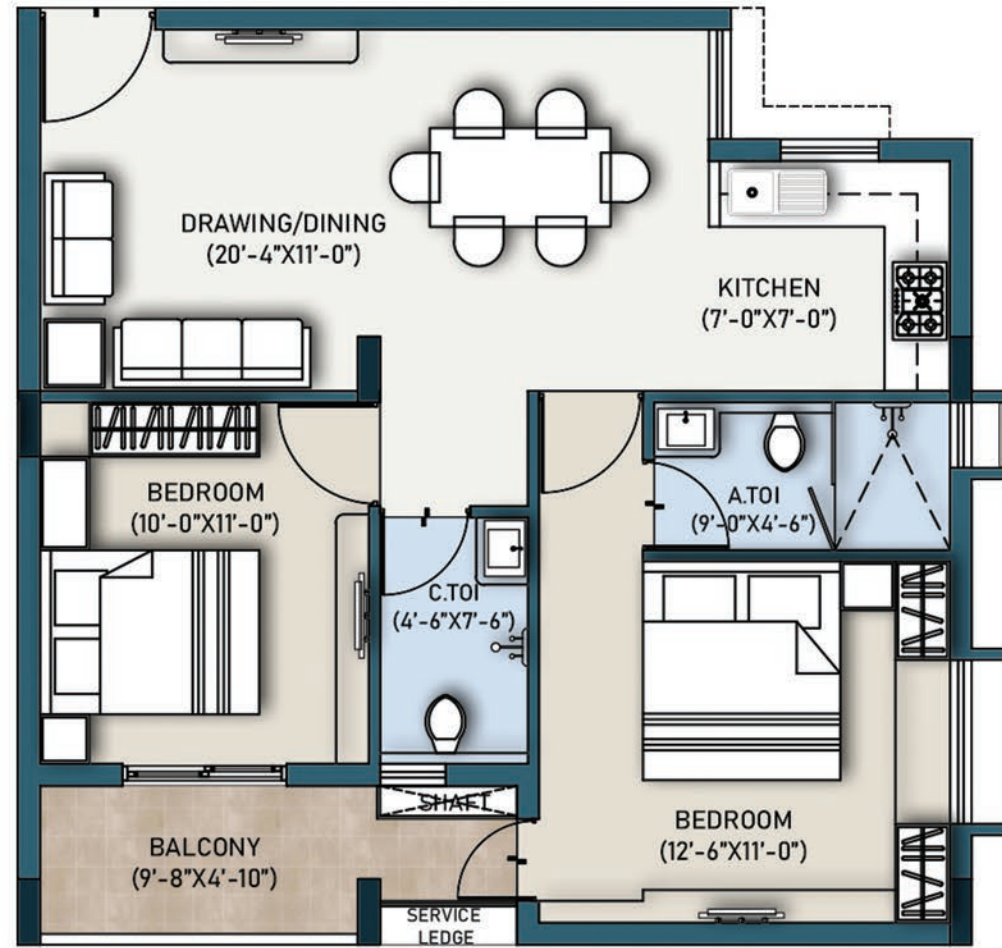
Flat No: A-3, B-3, C-3, D-3, E-3 (2BHK)  
 Carpet area: 60.15 SQ.M  
 Balcony Area: 5.85 SQ.M  
 Built Up Area: 71.97 SQ.M  
 Super Built Up Area: 97.15 SQ.M (1046 SQ.FT.)

Flat No: A-2, B-2, C-2, D-2, E-2 (2BHK)  
 Carpet area: 58.25 SQ.M  
 Balcony Area: 5.85 SQ.M  
 Built Up Area: 69.57 SQ.M  
 Super Built Up Area: 93.91 SQ.M (1011 SQ.FT.)

Flat No: A-1, B-1, C-1, D-1, E-1 (2BHK)  
 Carpet area: 60.29 SQ.M  
 Balcony Area: 5.85 SQ.M  
 Built Up Area: 72.63 SQ.M  
 Super Built Up Area: 98.05 SQ.M (1055 SQ.FT.)

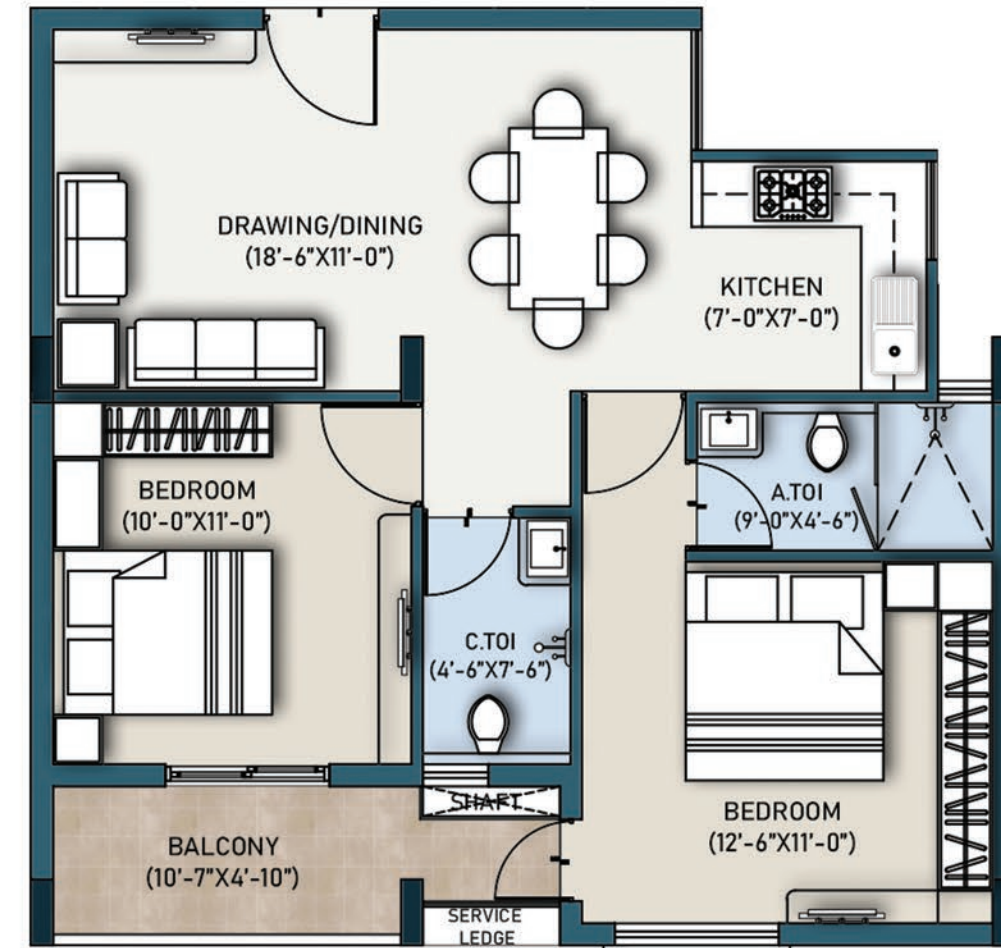


# FLOOR PLAN



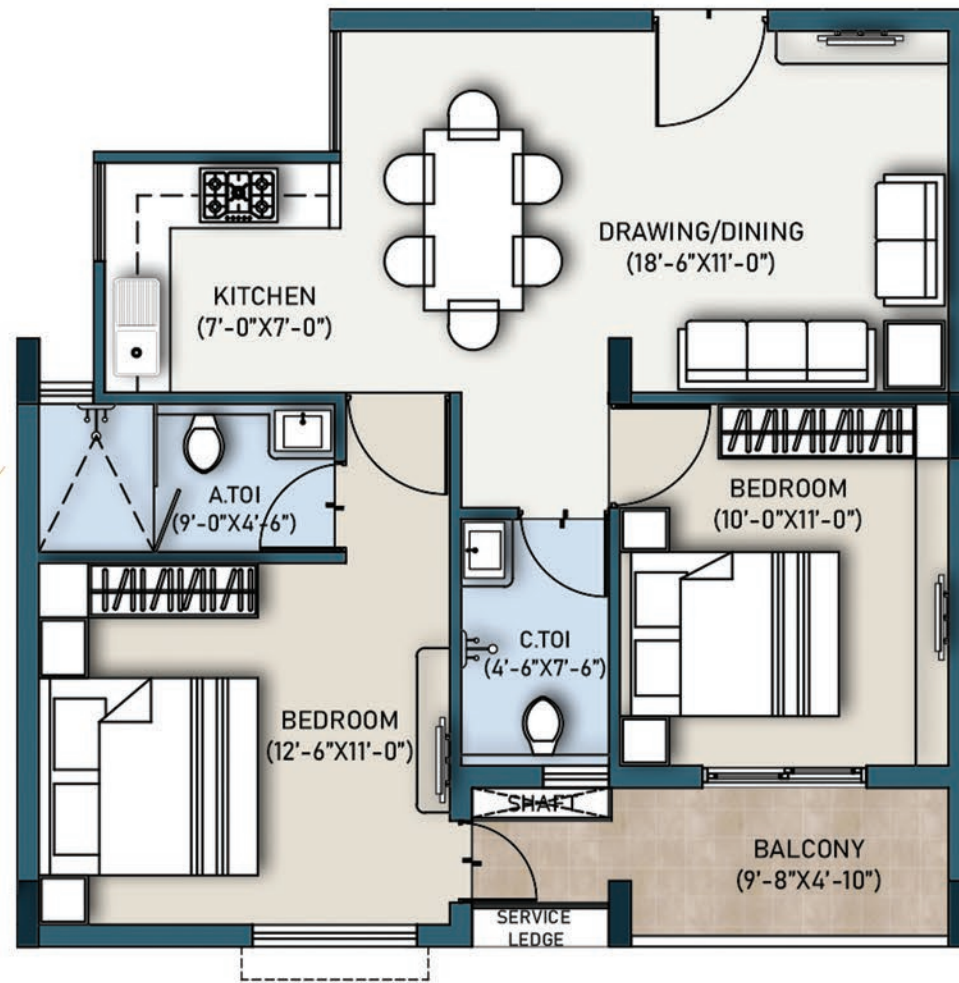
Flat No: A-1, B-1, C-1, D-1, E-1 (2BHK)  
 Carpet area: 60.29 SQ.M  
 Balcony Area: 5.85 SQ.M  
 Built Up Area: 72.63 SQ.M  
 Super Built Up Area: 98.05 SQ.M  
 (1055 SQ.FT.)

# FLOOR PLAN

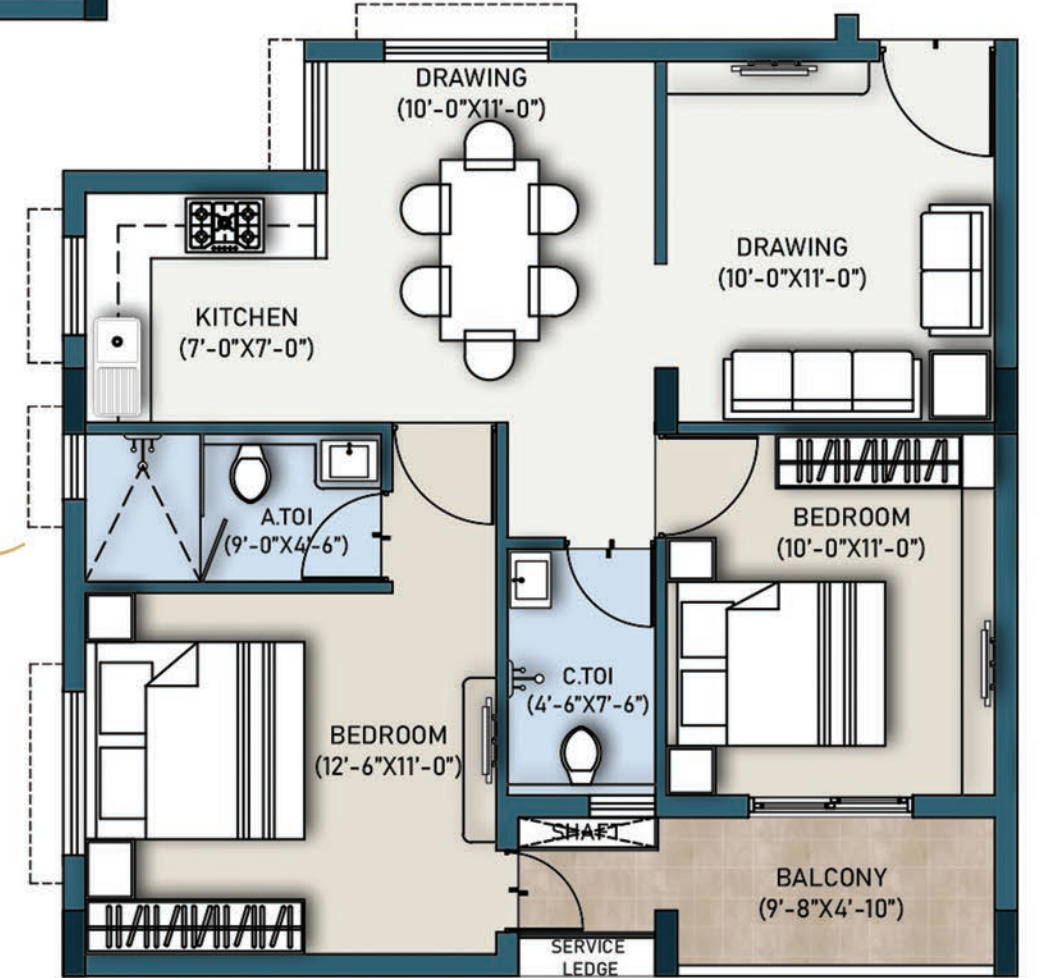


Flat No: A-3, B-3, C-3, D-3, E-3 (2BHK)  
 Carpet area: 60.15 SQ.M  
 Balcony Area: 5.85 SQ.M  
 Built Up Area: 71.97 SQ.M  
 Super Built Up Area: 97.15 SQ.M  
 (1046 SQ.FT.)

Flat No: A-2, B-2, C-2, D-2, E-2 (2BHK)  
 Carpet area: 58.25 SQ.M  
 Balcony Area: 5.85 SQ.M  
 Built Up Area: 69.57 SQ.M  
 Super Built Up Area: 93.91 SQ.M  
 (1011 SQ.FT.)

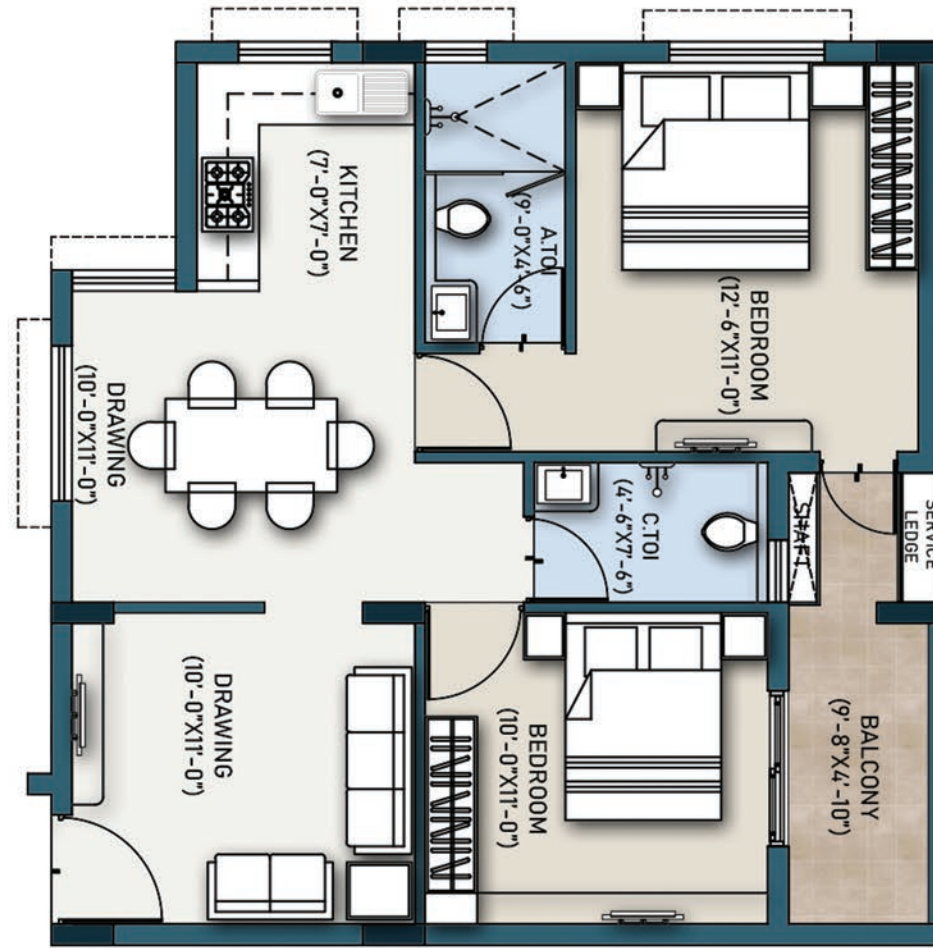


Flat No: A4, B-4, C-4, D-4, E-4 (2BHK)  
 Carpet area: 60.29 SQ.M  
 Balcony Area: 5.85 SQ.M  
 Built Up Area: 72.67 SQ.M  
 Super Built Up Area: 98.10 SQ.M  
 (1056 SQ.FT.)

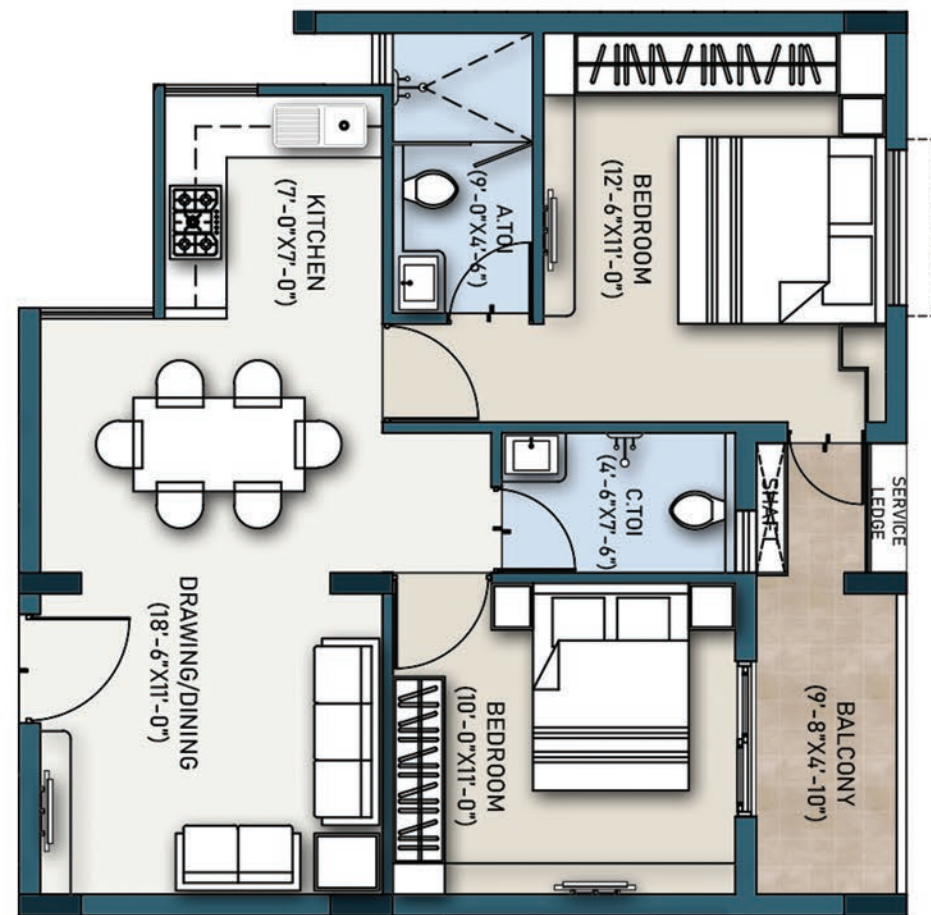




# FLOOR PLAN

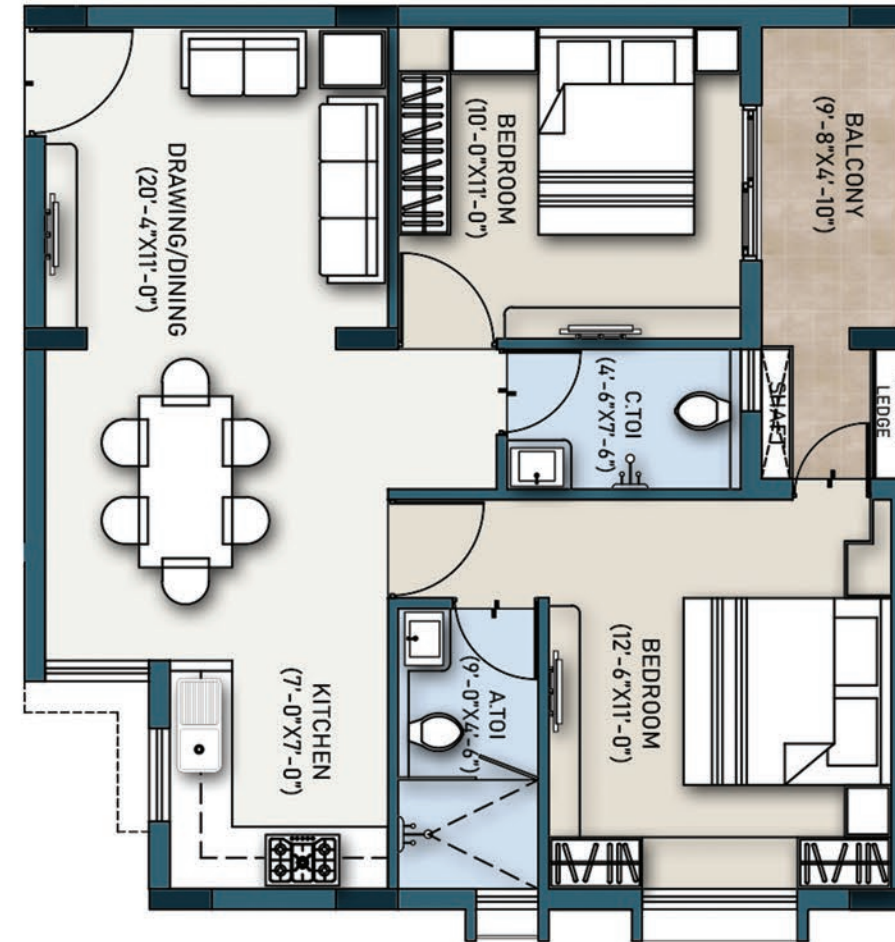


Flat No: A-5, B-5, C-5, D-5, E-5 (2BHK)  
 Carpet area: 60.28 SQ.M  
 Balcony Area: 5.85 SQ.M  
 Built Up Area: 73.54 SQ.M  
 Super Built Up Area: 99.27 SQ.M  
 (1069 SQ.FT.)



Flat No: A-6, B-6, C-6, D-6, E-6 (2BHK)  
 Carpet area: 58.25 SQ.M  
 Balcony Area: 5.85 SQ.M  
 Built Up Area: 70.04 SQ.M  
 Super Built Up Area: 94.55 SQ.M  
 (1018 SQ.FT.)

# FLOOR PLAN



Flat No: A-7, B-7, C-7, D-7, E-7 (2BHK)  
 Carpet area: 60.29 SQ.M  
 Balcony Area: 5.85 SQ.M  
 Built Up Area: 72.63 SQ.M  
 Super Built Up Area: 98.05 SQ.M  
 (1056 SQ.FT.)

